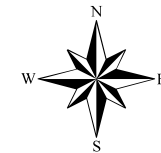
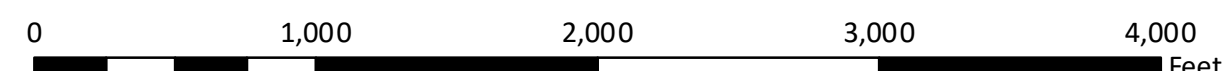


Zoning Regulations of 2016 - Zoning Districts

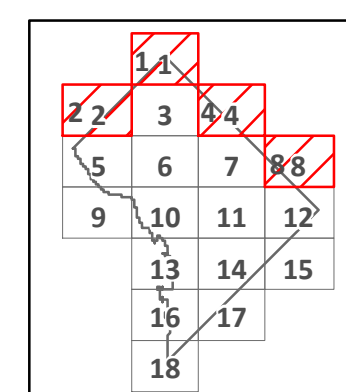
- | | |
|--------------------------------------------------|---------------------------------------|
| R - Residential Zones | HE - Hill East Zones |
| RF - Residential Flat Zones | ARTS - Mixed-Use Uptown Arts Zones |
| RA - Residential Apartment Zones | RC - Reed-Cooke Zones |
| MU - Mixed-Use Zones | SEFC - Southeast Federal Center Zones |
| NC - Neighborhood Mixed Use Zones | StE - St. Elizabeths Zones |
| D - Downtown Zones | USN - Union Station North Zones |
| PDR - Production, Distribution, and Repair Zones | WR - Walter Reed Zones |
| CG - Capitol Gateway Zones | |

**Summary Extract of the
Official Zoning Map of the District of Columbia
Printed on October 1, 2017**

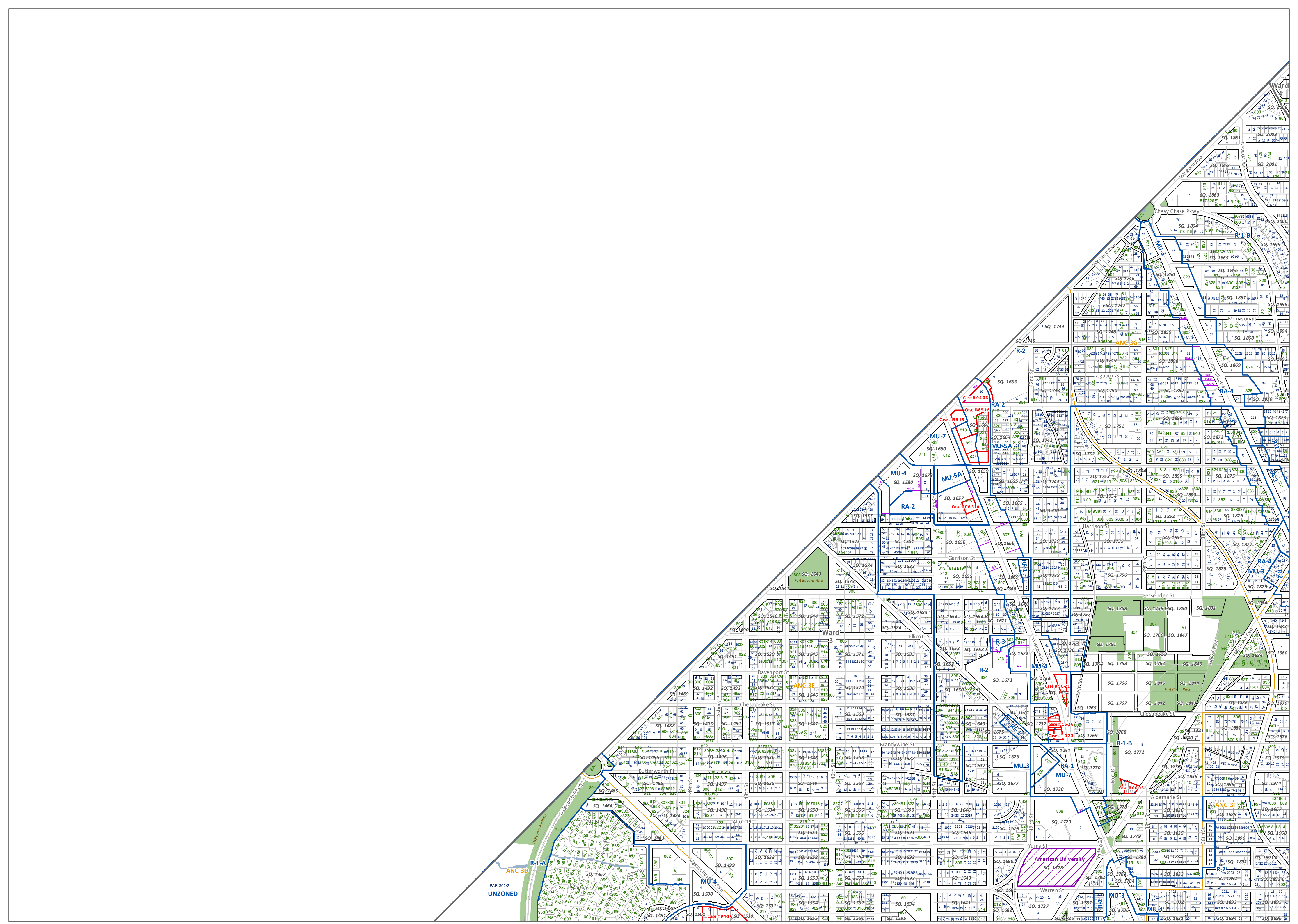


To certify zoning on any property in order to satisfy a legal requirement, contact the Office of Zoning at the address or number listed below.
Prepared by the District of Columbia Office of Zoning, 441 4th Street, NW
Suite 200 South, Washington, DC 20001 202-727-6311 <http://www.dcoz.dc.gov>

- | | | | |
|-------------------|----------------|------------------|-----------------|
| Active PUD | Campus Plans | Lot Boundary | Primary Street |
| Pending PUD | Zone Districts | Secondary Street | Tertiary Street |
| Downtown Subareas | ANC | Dimensions | |
| Pending Zoning | Ward | | |



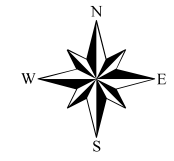
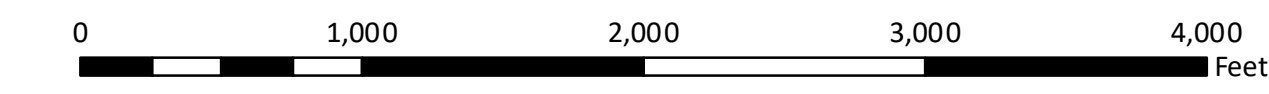
Map 1
**Zoning Map of the
District of Columbia**



Zoning Regulations of 2016 - Zoning Districts

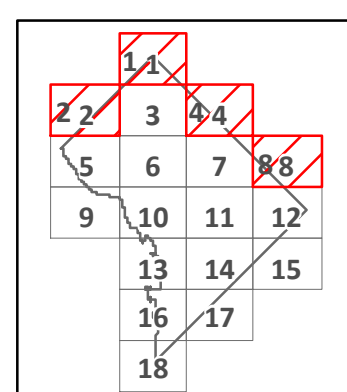
- R - Residential Zones
- RF - Residential Flat Zones
- RA - Residential Apartment Zones
- MU - Mixed-Use Zones
- NC - Neighborhood Mixed Use Zones
- D - Downtown Zones
- PDR - Production, Distribution, and Repair Zones
- CG - Capitol Gateway Zones
- HE - Hill East Zones
- ARTS - Mixed-Use Uptown Arts Zones
- RC - Reed-Cooke Zones
- SEFC - Southeast Federal Center Zones
- StE - St. Elizabeths Zones
- USN - Union Station North Zones
- PDR - Production, Distribution, and Repair Zones
- WR - Walter Reed Zones

**Summary Extract of the
Official Zoning Map of the District of Columbia
Printed on October 1, 2017**

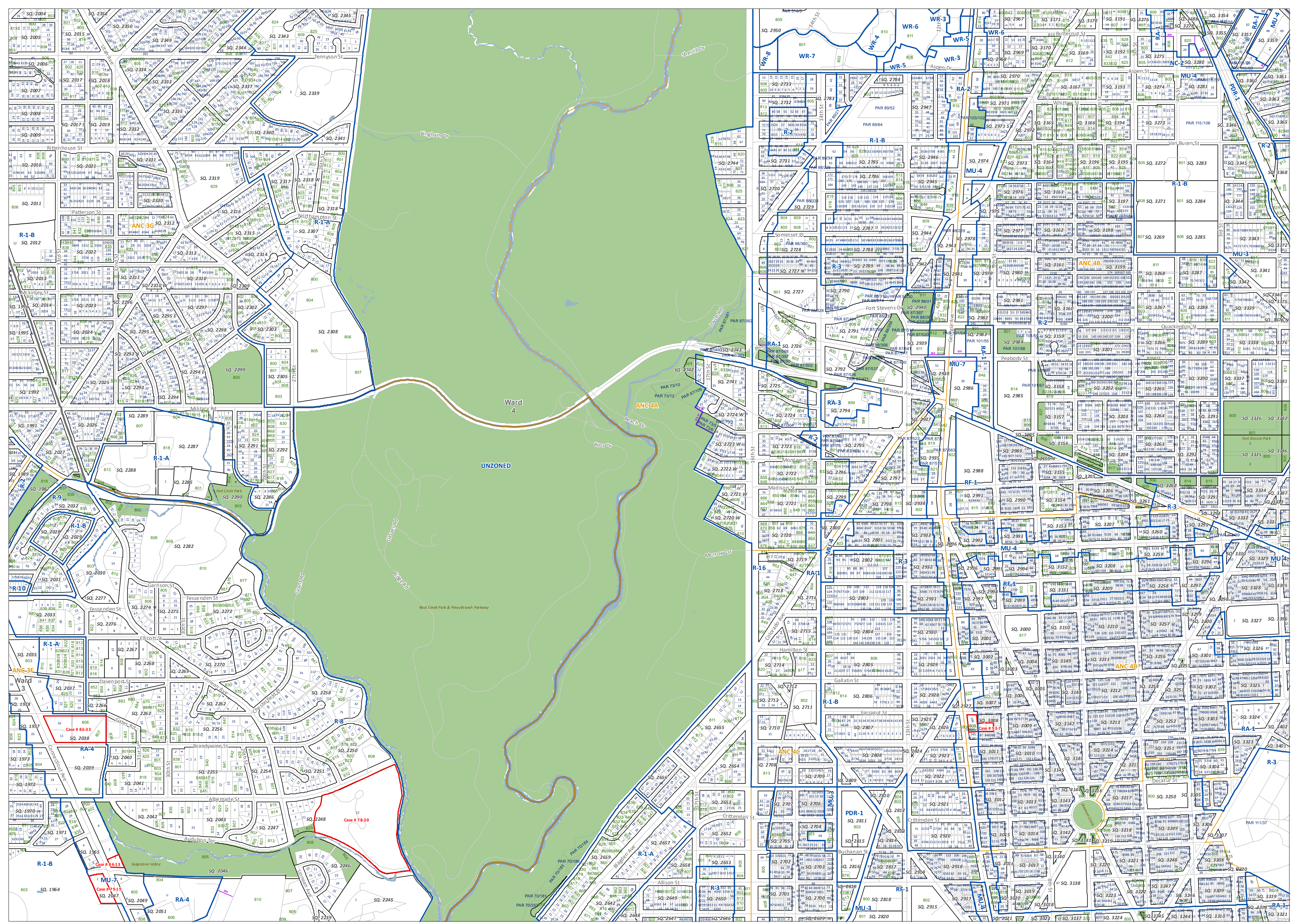


To certify zoning on any property in order to satisfy a legal requirement, contact the Office of Zoning at the address or number listed below.
Prepared by the District of Columbia Office of Zoning, 441 4th Street, NW Suite 200 South, Washington, DC 20001 202-727-6311 <http://www.dcoz.dc.gov>

- Active PUD
- Campus Plans
- Lot Boundary
- Primary Street
- Pending PUD
- Zone Districts
- Secondary Street
- Downtown Subareas
- ANC
- Tertiary Street
- Pending Zoning
- Ward
- Dimensions



Map 2
Zoning Map of the District of Columbia



Zoning Regulations of 2016 - Zoning Districts

R - Residential Zones	HE - Hill East Zones
RF - Residential Flat Zones	ARTS - Mixed-Use Uptown Arts Zones
RA - Residential Apartment Zones	RC - Reed-Cooke Zones
MU - Mixed-Use Zones	SEFC - Southeast Federal Center Zones
NC - Neighborhood Mixed Use Zones	StE - St. Elizabeths Zones
D - Downtown Zones	USN - Union Station North Zones
PDR - Production, Distribution, and Repair Zones	WR - Walter Reed Zones
CG - Capitol Gateway Zones	

Summary Extract of the Official Zoning Map of the District of Columbia
 Printed on October 1, 2017

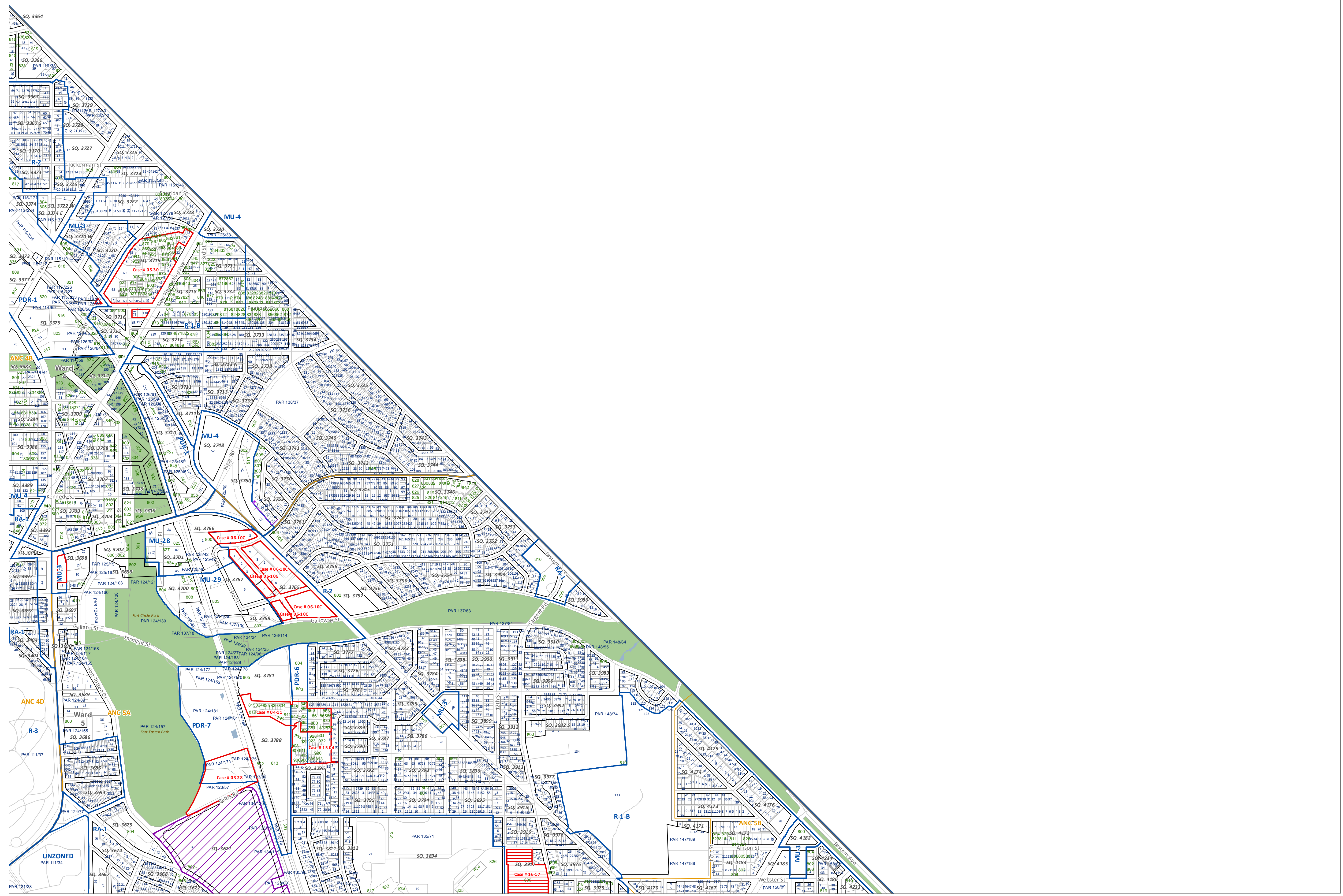
0 1,000 2,000 3,000 4,000 Feet

To contact zoning on any property in order to satisfy a legal requirement, contact the Office of Zoning at the address or number listed below.
 Prepared by the District of Columbia Office of Zoning, 441 4th Street, NW Suite 200 South, Washington, DC 20001 202-727-6311 <http://www.dcoz.dc.gov>

- Active PUD
- Pending PUD
- Downtown Subareas
- Pending Zoning
- Campus Plans
- Zone Districts
- ANC
- Ward
- Lot Boundary
- Primary Street
- Secondary Street
- Tertiary Street
- Dimensions

Map 3

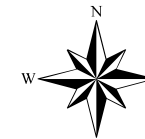
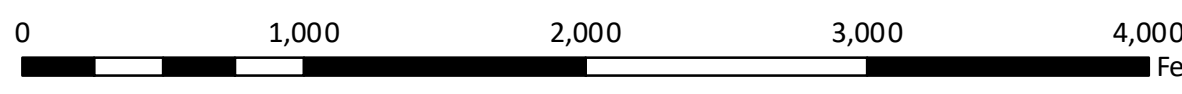
Zoning Map of the District of Columbia



Zoning Regulations of 2016 - Zoning Districts

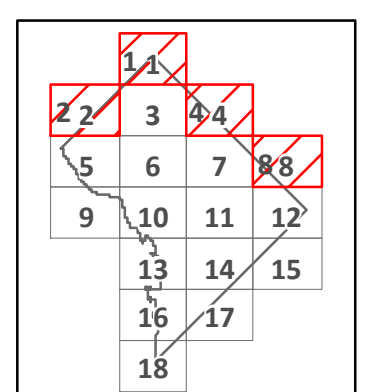
R - Residential Zones	HE - Hill East Zones
RF - Residential Flat Zones	ARTS - Mixed-Use Uptown Arts Zones
RA - Residential Apartment Zones	RC - Reed-Cooke Zones
MU - Mixed-Use Zones	SEFC - Southeast Federal Center Zones
NC - Neighborhood Mixed Use Zones	StE - St. Elizabeths Zones
D - Downtown Zones	USN - Union Station North Zones
PDR - Production, Distribution, and Repair Zones	WR - Walter Reed Zones
CG - Capitol Gateway Zones	

**Summary Extract of the
Official Zoning Map of the District of Columbia
Printed on October 1, 2017**



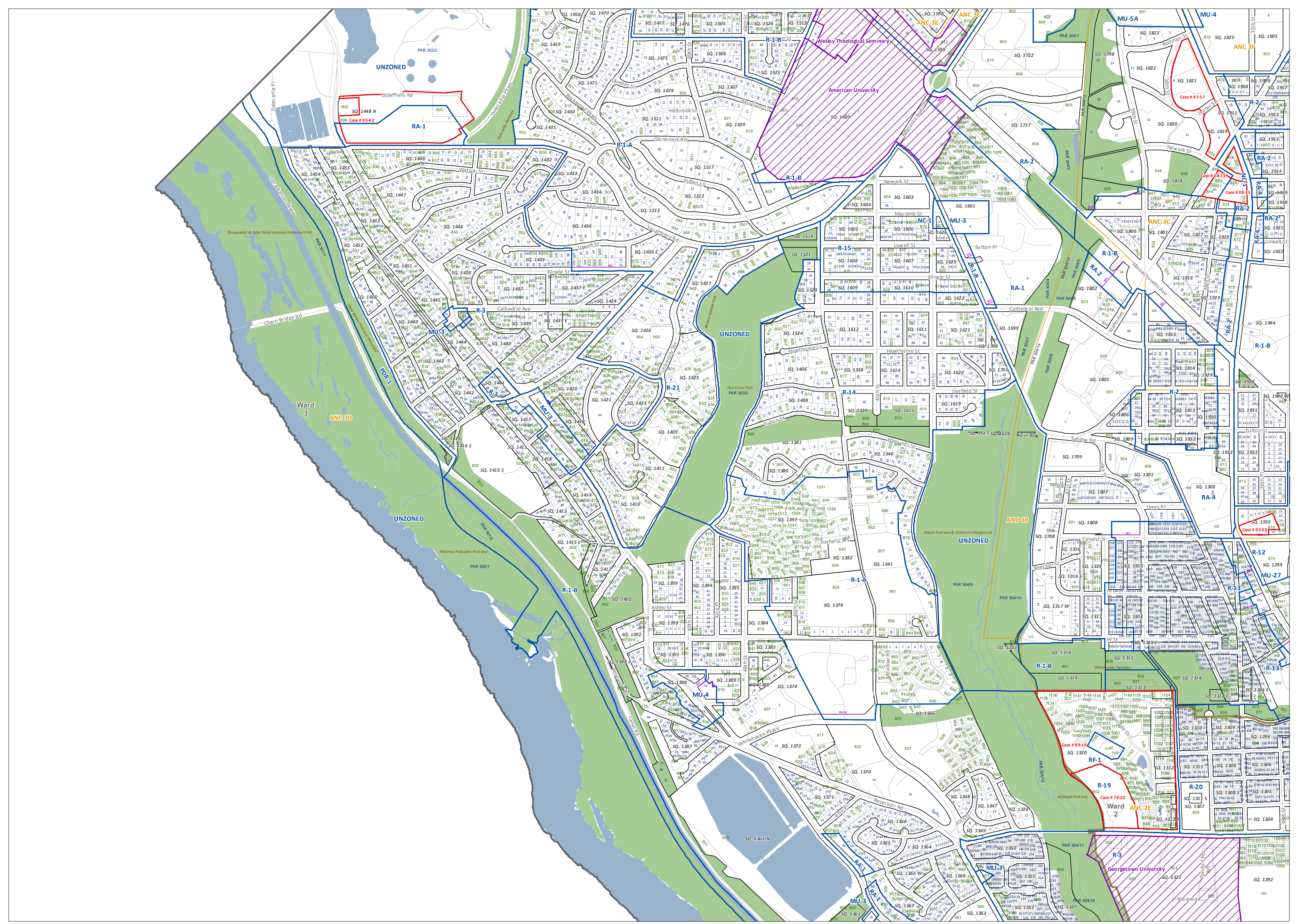
To certify zoning on any property in order to satisfy a legal requirement, contact the Office of Zoning at the address or number listed below.
Prepared by the District of Columbia Office of Zoning, 441 4th Street, NW
Suite 200 South, Washington, DC 20001 202-727-6311 <http://www.dcoz.dc.gov>

- Active PUD
- Pending PUD
- Downtown Subareas
- Pending Zoning
- Campus Plans
- Zone Districts
- ANC
- Ward
- Lot Boundary
- Primary Street
- Secondary Street
- Tertiary Street
- Dimensions



Map 4

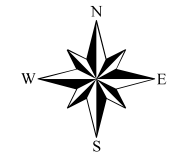
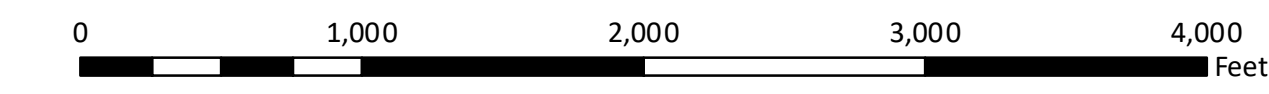
**Zoning Map of the
District of Columbia**



Zoning Regulations of 2016 - Zoning Districts

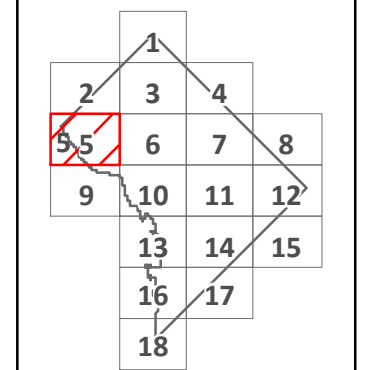
- R - Residential Zones
- RF - Residential Flat Zones
- RA - Residential Apartment Zones
- MU - Mixed-Use Zones
- NC - Neighborhood Mixed Use Zones
- D - Downtown Zones
- PDR - Production, Distribution, and Repair Zones
- CG - Capitol Gateway Zones
- HE - Hill East Zones
- ARTS - Mixed-Use Uptown Arts Zones
- RC - Reed-Cooke Zones
- SEFC - Southeast Federal Center Zones
- StE - St. Elizabeths Zones
- USN - Union Station North Zones
- WR - Walter Reed Zones

**Summary Extract of the
Official Zoning Map of the District of Columbia
Printed on October 1, 2017**

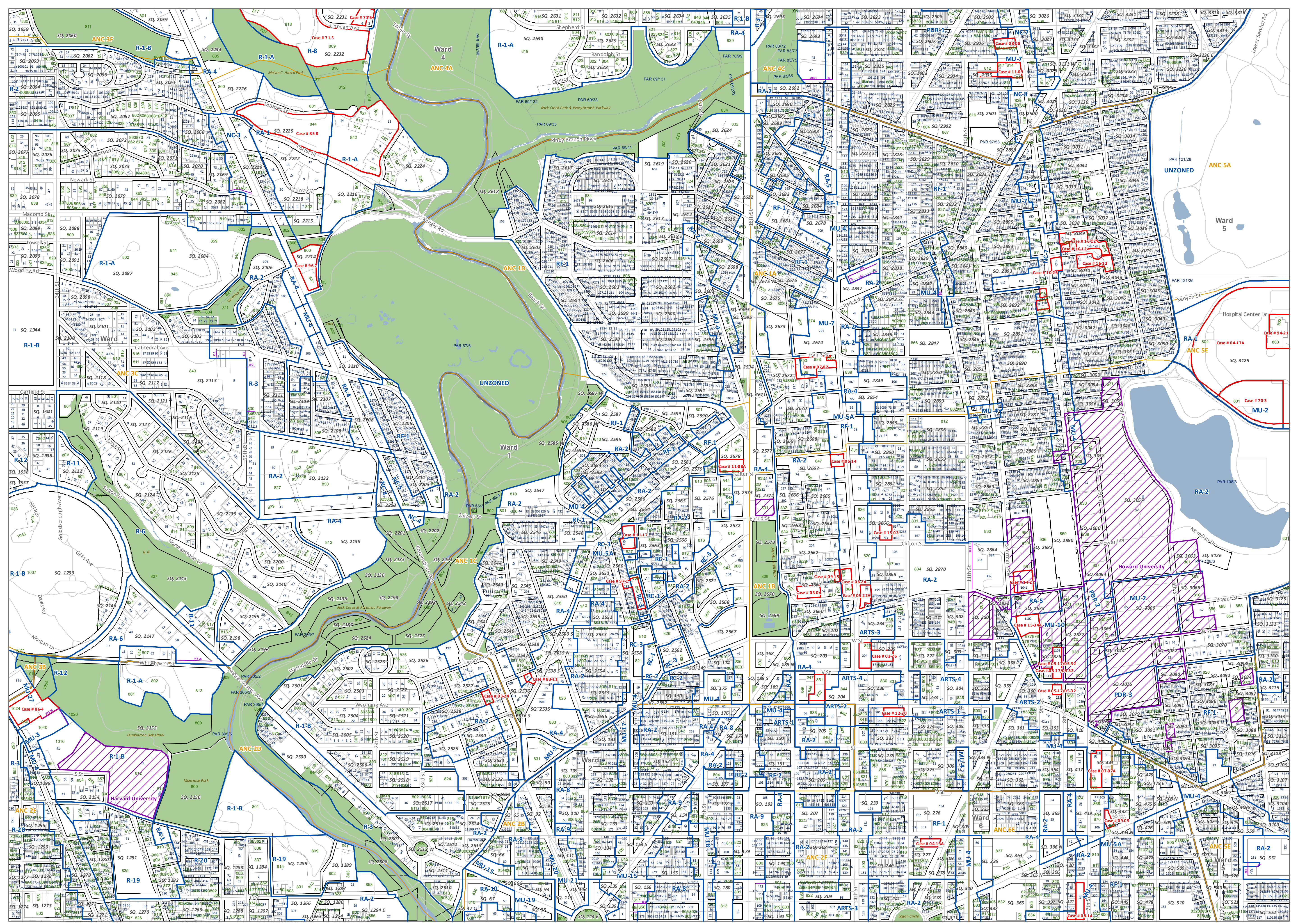


To certify zoning on any property in order to satisfy a legal requirement, contact the Office of Zoning at the address or number listed below.
Prepared by the District of Columbia Office of Zoning, 441 4th Street, NW Suite 200 South, Washington, DC 20001 202-727-6311 <http://www.dcoz.dc.gov>

- Active PUD
- Campus Plans
- Lot Boundary
- Primary Street
- Pending PUD
- Zone Districts
- Secondary Street
- Tertiary Street
- Downtown Subareas
- ANC
- Dimensions
- Pending Zoning
- Ward



**Map 5
Zoning Map of the
District of Columbia**



Zoning Regulations of 2016 - Zoning Districts

R - Residential Zones	HE - Hill East Zones
RF - Residential Flat Zones	ARTS - Mixed-Use Uptown Arts Zones
RA - Residential Apartment Zones	RC - Reed-Cooke Zones
MU - Mixed-Use Zones	SEFC - Southeast Federal Center Zones
NC - Neighborhood Mixed Use Zones	StE - St. Elizabeths Zones
D - Downtown Zones	USN - Union Station North Zones
PDR - Production, Distribution, and Repair Zones	WR - Walter Reed Zones
CG - Capitol Gateway Zones	

**Summary Extract of the
Official Zoning Map of the District of Columbia
Printed on October 1, 2017**

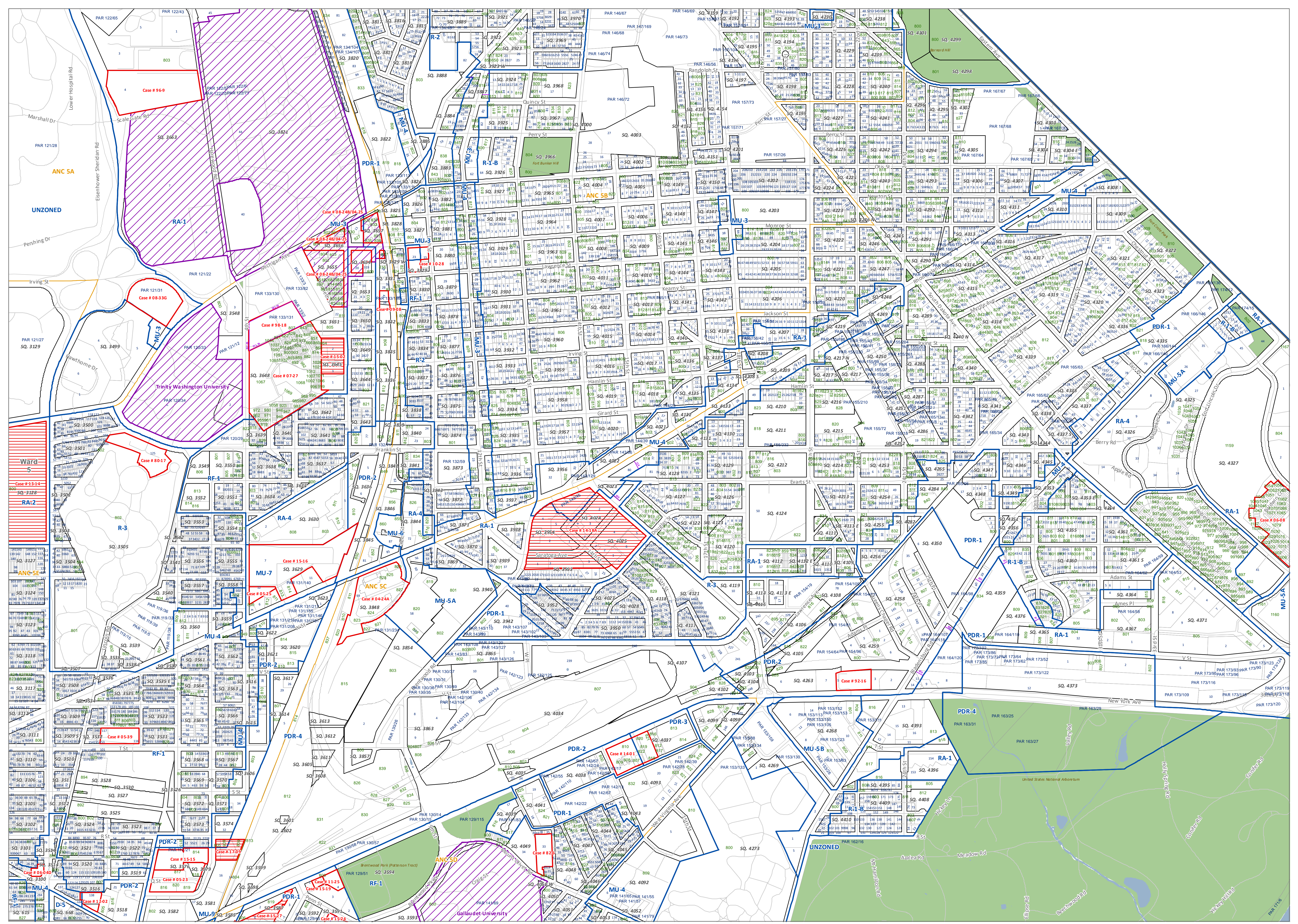
0 1,000 2,000 3,000 4,000 Feet

To certify zoning on any property in order to satisfy a legal requirement, contact the Office of Zoning at the address or number listed below.
Prepared by the District of Columbia Office of Zoning, 441 4th Street, NW Suite 200 South, Washington, DC 20001 202-727-6311 <http://www.dcoz.dc.gov>

Active PUD	Campus Plans	Lot Boundary	Primary Street
Pending PUD	Zone Districts	Secondary Street	Tertiary Street
Downtown Subareas	ANC	Tertiary Street	Dimensions
Pending Zoning	Ward		

Map 6

Zoning Map of the District of Columbia



Zoning Regulations of 2016 - Zoning Districts

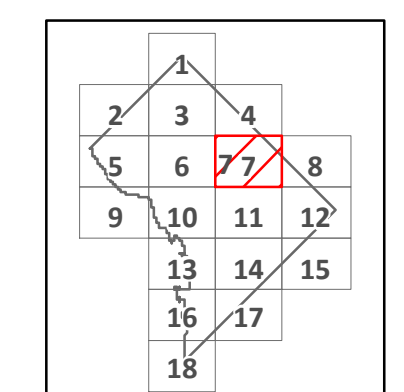
R - Residential Zones	HE - Hill East Zones
RF - Residential Flat Zones	ARTS - Mixed-Use Uptown Arts Zones
RA - Residential Apartment Zones	RC - Reed-Cook Zones
MU - Mixed-Use Zones	SEFC - Southeast Federal Center Zones
NC - Neighborhood Mixed Use Zones	StE - St. Elizabeths Zones
D - Downtown Zones	USN - Union Station North Zones
PDR - Production, Distribution, and Repair Zones	WR - Walter Reed Zones
CG - Capitol Gateway Zones	

**Summary Extract of the
Official Zoning Map of the District of Columbia
Printed on October 1, 2017**

0 1,000 2,000 3,000 4,000 Feet

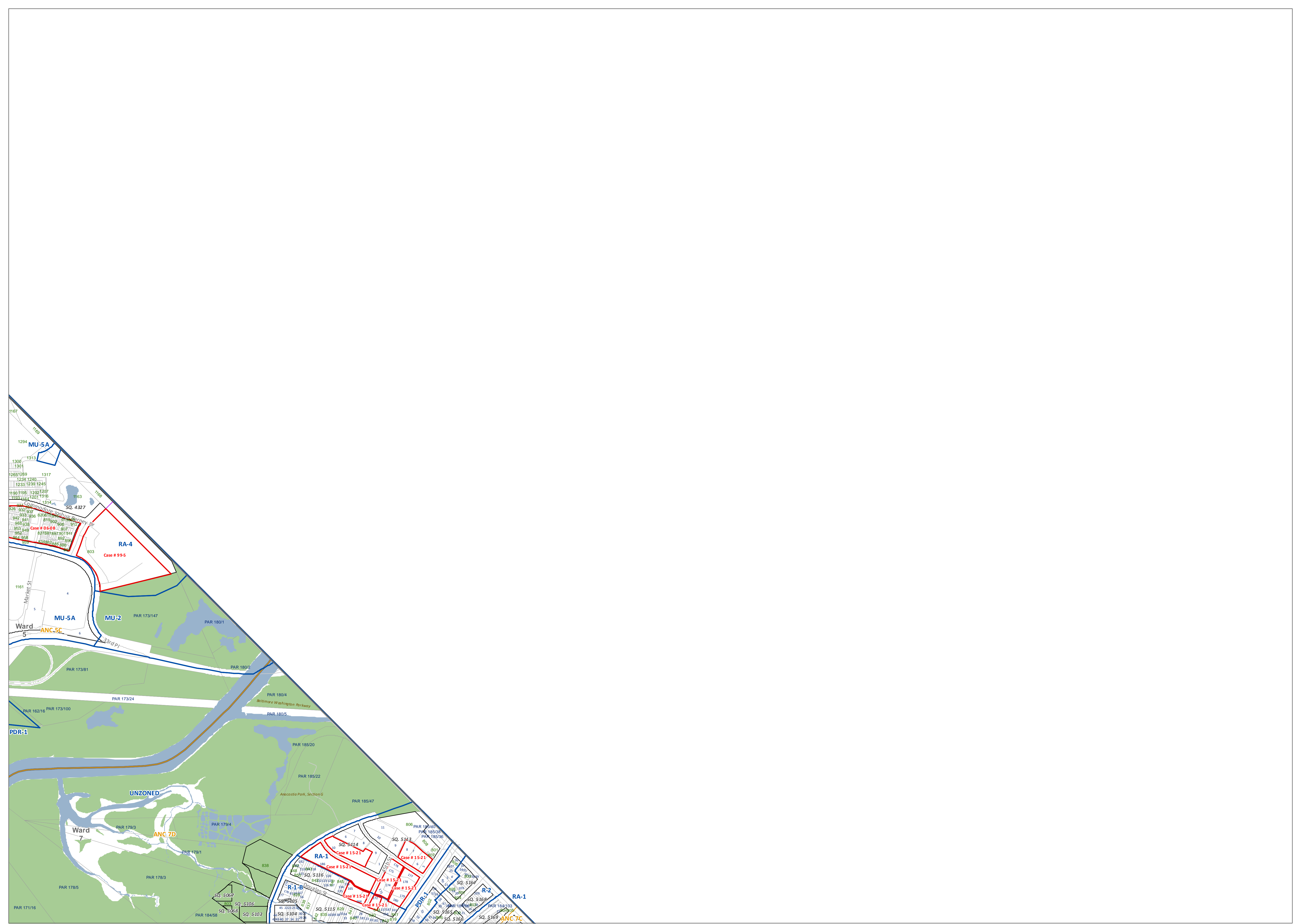
To certify zoning on any property in order to satisfy a legal requirement, contact the Office of Zoning at the address or number listed below.
Prepared by the District of Columbia Office of Zoning, 441 4th Street, NW Suite 200 South, Washington, DC 20001 202-727-6311 <http://www.dcoz.dc.gov>

- Active PUD
- Pending PUD
- Downtown Subareas
- Pending Zoning
- Campus Plans
- Zone Districts
- ANC
- Ward
- Lot Boundary
- Primary Street
- Secondary Street
- Tertiary Street
- Dimensions



Map 7

**Zoning Map of the
District of Columbia**

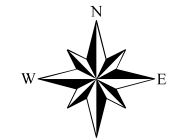
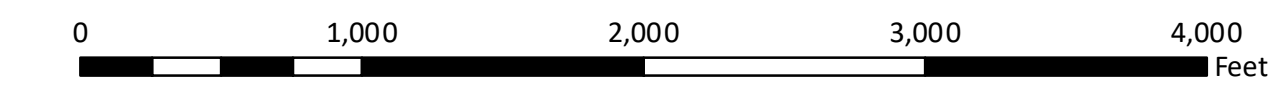


Zoning Regulations of 2016 - Zoning Districts

- R - Residential Zones
- RF - Residential Flat Zones
- RA - Residential Apartment Zones
- MU - Mixed-Use Zones
- NC - Neighborhood Mixed Use Zones
- D - Downtown Zones
- PDR - Production, Distribution, and Repair Zones
- CG - Capitol Gateway Zones

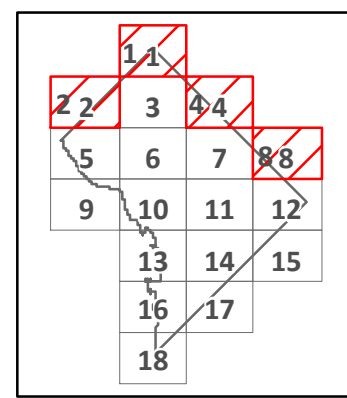
- HE - Hill East Zones
- ARTS - Mixed-Use Uptown Arts Zones
- RC - Reed-Cooke Zones
- SEFC - Southeast Federal Center Zones
- StE - St. Elizabeths Zones
- USN - Union Station North Zones
- WR - Walter Reed Zones

**Summary Extract of the Official Zoning Map of the District of Columbia
Printed on October 1, 2017**



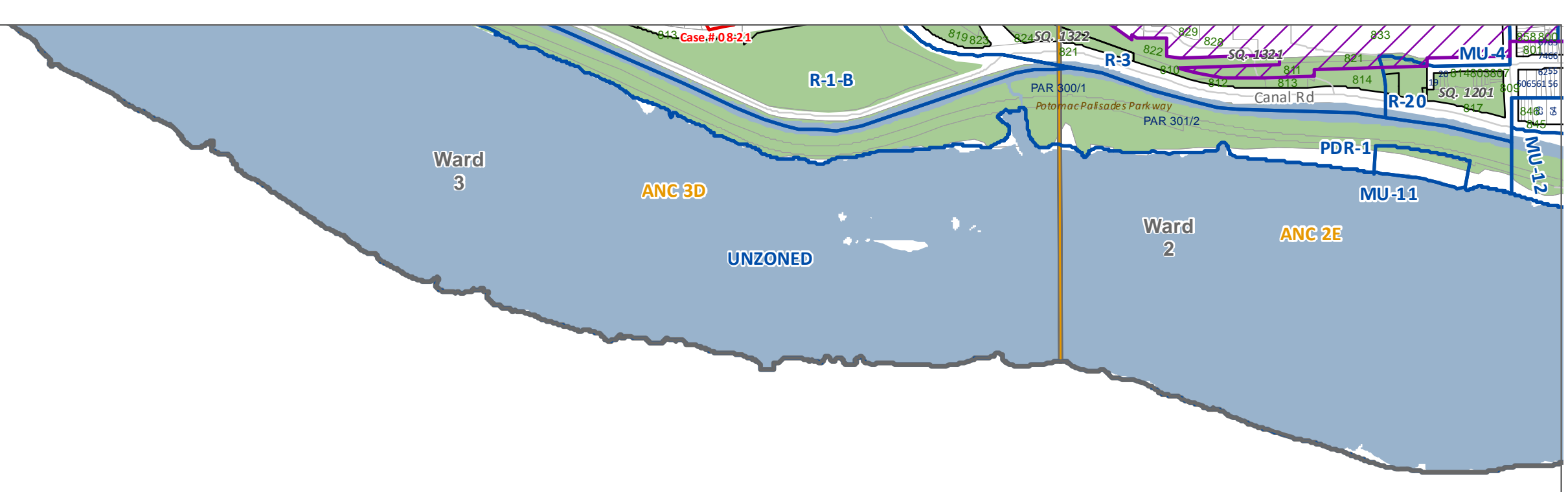
To certify zoning on any property in order to satisfy a legal requirement, contact the Office of Zoning at the address or number listed below.
Prepared by the District of Columbia Office of Zoning, 441 4th Street, NW Suite 200 South, Washington, DC 20001 202-727-6311 <http://www.dcoz.dc.gov>

- Active PUD
- Campus Plans
- Lot Boundary
- Primary Street
- Pending PUD
- Zone Districts
- Secondary Street
- Downtown Subareas
- ANC
- Tertiary Street
- Pending Zoning
- Ward
- Dimensions



Map 8

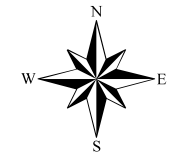
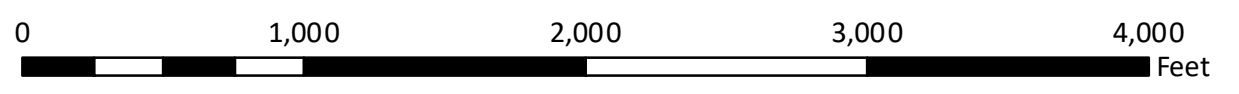
Zoning Map of the District of Columbia



Zoning Regulations of 2016 - Zoning Districts

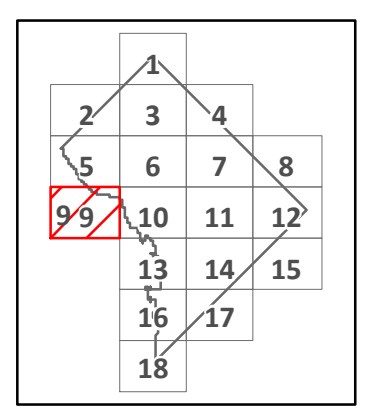
- | | |
|--------------------------------------------------|---------------------------------------|
| R - Residential Zones | HE - Hill East Zones |
| RF - Residential Flat Zones | ARTS - Mixed-Use Uptown Arts Zones |
| RA - Residential Apartment Zones | RC - Reed-Cooke Zones |
| MU - Mixed-Use Zones | SEFC - Southeast Federal Center Zones |
| NC - Neighborhood Mixed Use Zones | StE - St. Elizabeths Zones |
| D - Downtown Zones | USN - Union Station North Zones |
| PDR - Production, Distribution, and Repair Zones | WR - Walter Reed Zones |
| CG - Capitol Gateway Zones | |

**Summary Extract of the
Official Zoning Map of the District of Columbia
Printed on October 1, 2017**



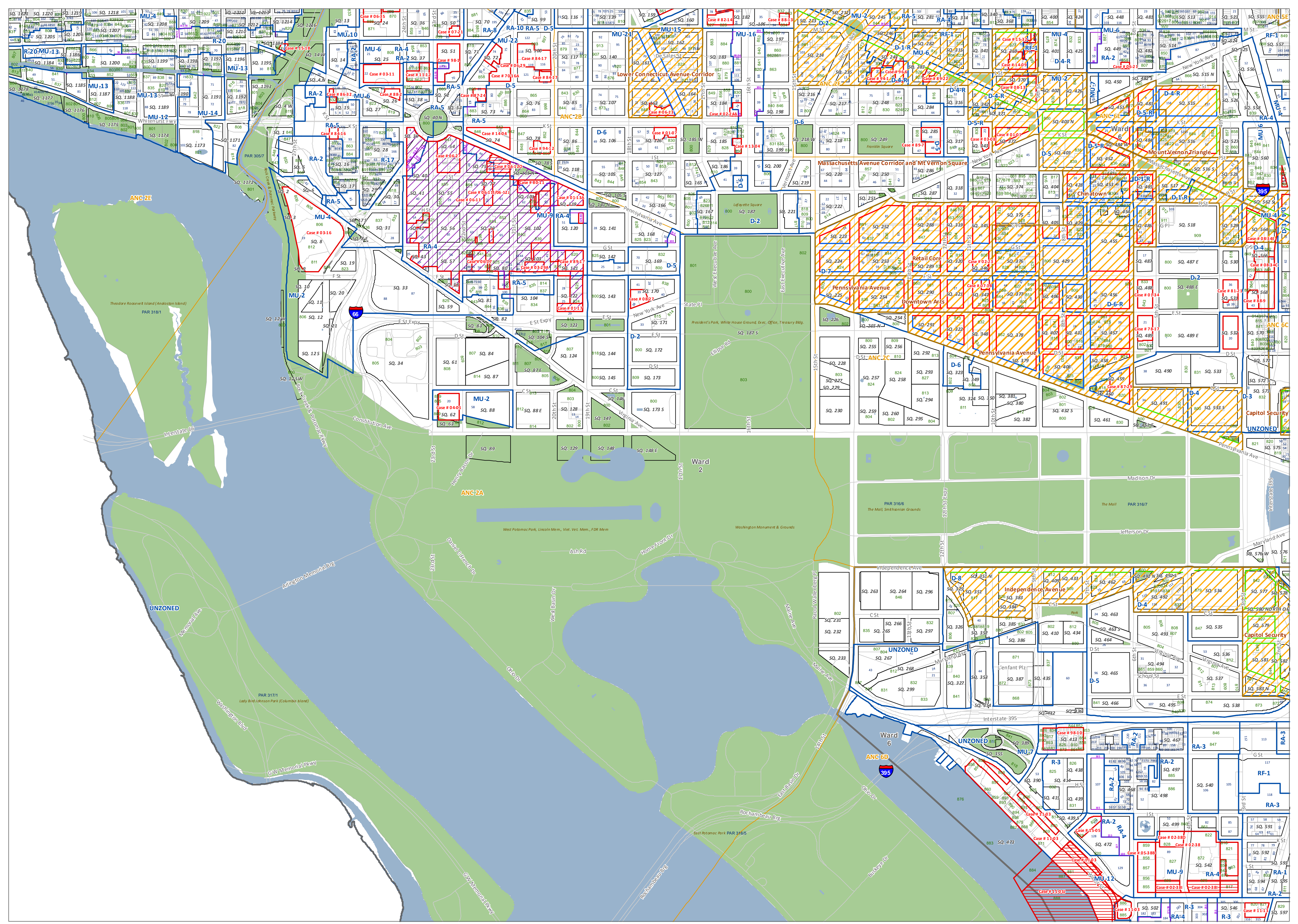
To certify zoning on any property in order to satisfy a legal requirement, contact the Office of Zoning at the address or number listed below.
Prepared by the District of Columbia Office of Zoning, 441 4th Street, NW Suite 200 South, Washington, DC 20001 202-727-6311 <http://www.dcoz.dc.gov>

- | | | | |
|-------------------|----------------|--------------|------------------|
| Active PUD | Campus Plans | Lot Boundary | Primary Street |
| Pending PUD | Zone Districts | | Secondary Street |
| Downtown Subareas | ANC | | Tertiary Street |
| Pending Zoning | Ward | | Dimensions |



Map 9

**Zoning Map of the
District of Columbia**



Zoning Regulations of 2016 - Zoning Districts

R - Residential Zones	HE - Hill East Zones
RF - Residential Flat Zones	ARTS - Mixed-Use Uptown Arts Zones
RA - Residential Apartment Zones	RC - Reed-Cooke Zones
MU - Mixed-Use Zones	SEFC - Southeast Federal Center Zones
NC - Neighborhood Mixed Use Zones	StE - St. Elizabeths Zones
D - Downtown Zones	USN - Union Station North Zones
PDR - Production, Distribution, and Repair Zones	WR - Walter Reed Zones
CG - Capitol Gateway Zones	

**Summary Extract of the
Official Zoning Map of the District of Columbia
Printed on October 1, 2017**

0 1,000 2,000 3,000 4,000 Feet

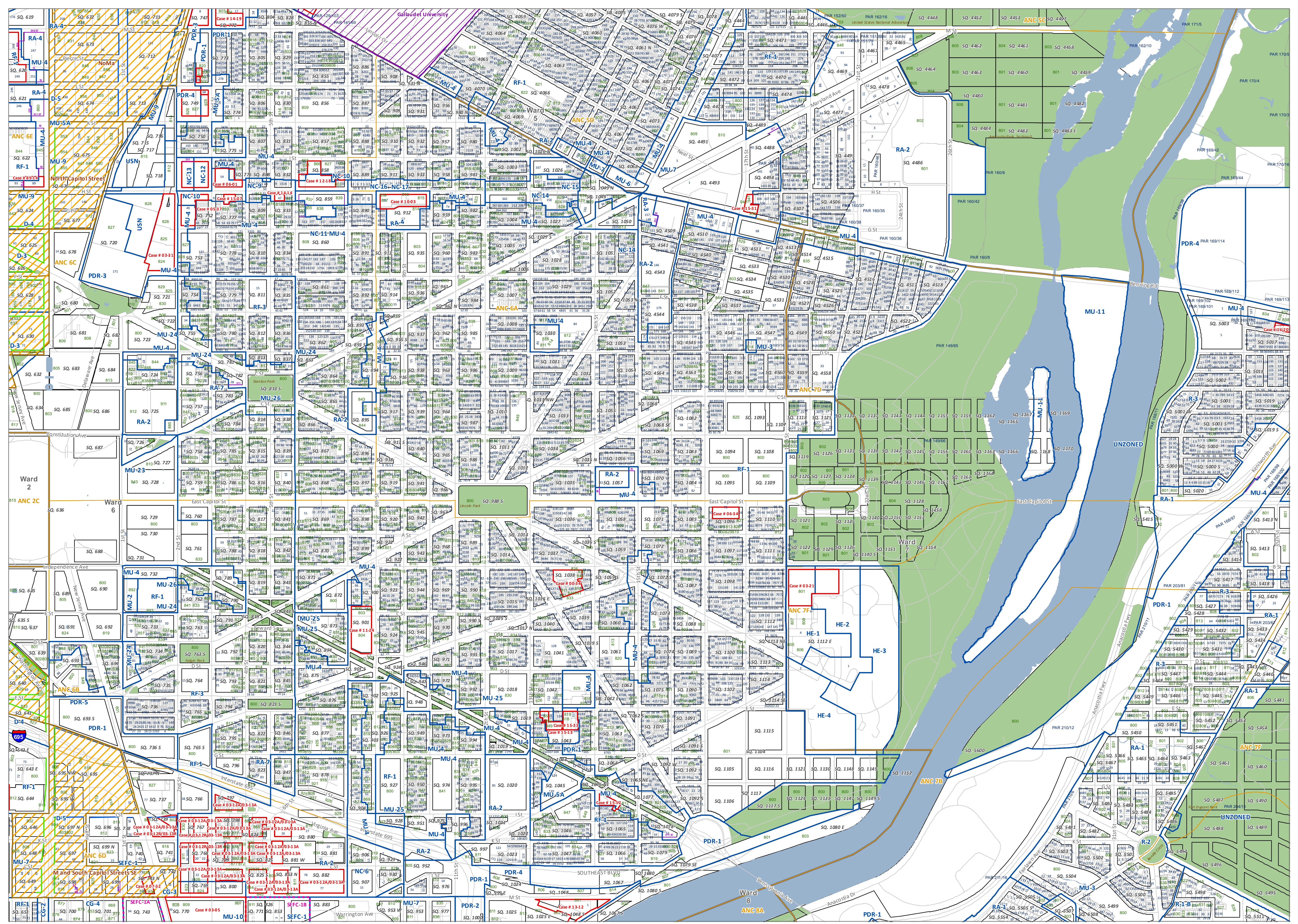
To certify zoning on any property in order to satisfy a legal requirement, contact the Office of Zoning at the address or number listed below.
Prepared by the District of Columbia Office of Zoning, 441 4th Street, NW, Suite 200 South, Washington, DC 20001 202-727-6311 <http://www.dcoz.dc.gov>

- Active PUD
- Pending PUD
- Downtown Subareas
- Pending Zoning
- Campus Plans
- Zone Districts
- ANC
- Ward
- Lot Boundary
- Primary Street
- Secondary Street
- Tertiary Street
- Dimensions

2	3	4
5	6	7
9	10	11
13	14	15
16	17	18

Map 10

Zoning Map of the District of Columbia



Zoning Regulations of 2016 - Zoning Districts

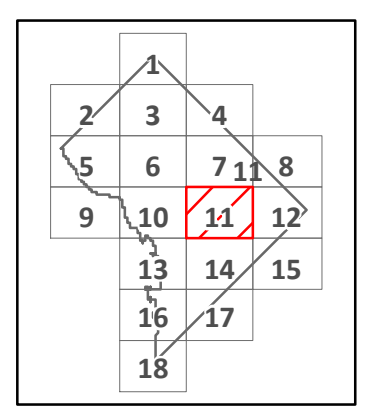
R - Residential Zones	HE - Hill East Zones
RF - Residential Flat Zones	ARTS - Mixed-Use Uptown Arts Zones
RA - Residential Apartment Zones	RC - Reed-Cooke Zones
MU - Mixed-Use Zones	SEFC - Southeast Federal Center Zones
NC - Neighborhood Mixed Use Zones	StE - St. Elizabeths Zones
D - Downtown Zones	USN - Union Station North Zones
PDR - Production, Distribution, and Repair Zones	WR - Walter Reed Zones
CG - Capitol Gateway Zones	

**Summary Extract of the
Official Zoning Map of the District of Columbia
Printed on October 1, 2017**

0 1,000 2,000 3,000 4,000 Feet

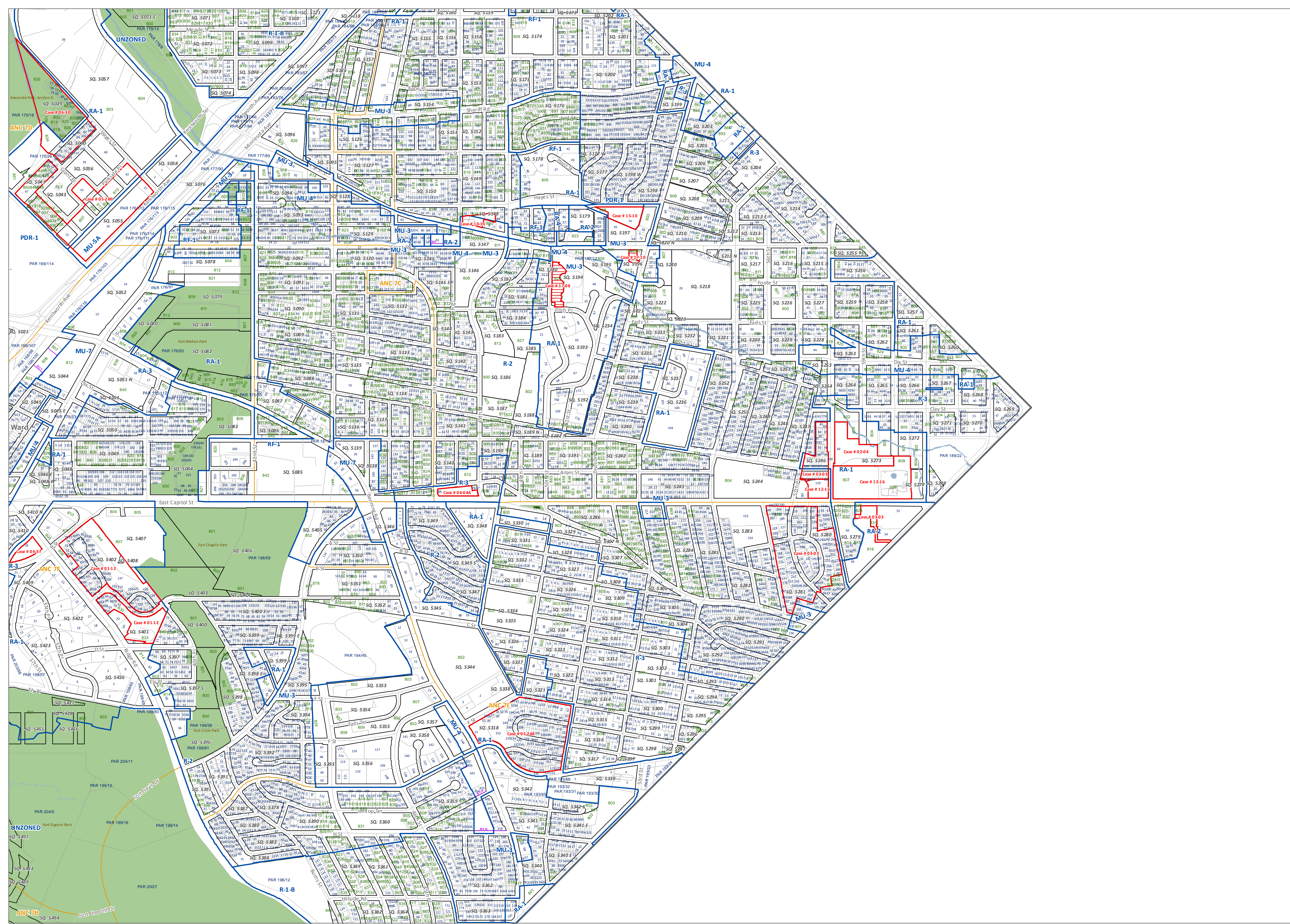
To certify zoning on any property in order to satisfy a legal requirement, contact the Office of Zoning at the address or number listed below.
Prepared by the District of Columbia Office of Zoning, 441 4th Street, NW, Suite 200 South, Washington, DC 20001 202-727-6311 <http://www.dcoz.dc.gov>

- Active PUD
- Pending PUD
- Downtown Subareas
- Pending Zoning
- Campus Plans
- Zone Districts
- ANC
- Ward
- Lot Boundary
- Primary Street
- Secondary Street
- Tertiary Street
- Dimensions



Map 11

**Zoning Map of the
District of Columbia**



Zoning Regulations of 2016 - Zoning Districts

R - Residential Zones
 RF - Residential Flat Zones
 RA - Residential Apartment Zones
 MU - Mixed-Use Zones
 NC - Neighborhood Mixed Use Zones
 D - Downtown Zones
 PDR - Production, Distribution, and Repair Zones
 CG - Capitol Gateway Zones

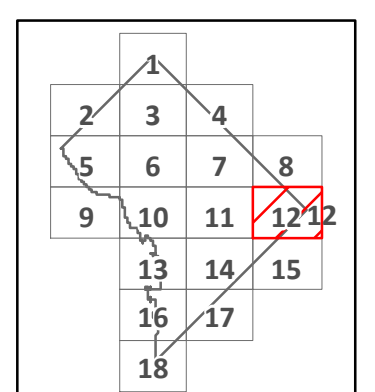
HE - Hill East Zones
 ARTS - Mixed-Use Uptown Arts Zones
 RC - Reed-Cooke Zones
 SEFC - Southeast Federal Center Zones
 StE - St. Elizabeths Zones
 USN - Union Station North Zones
 WR - Walter Reed Zones

Summary Extract of the Official Zoning Map of the District of Columbia
 Printed on October 1, 2017

0 1,000 2,000 3,000 4,000 Feet

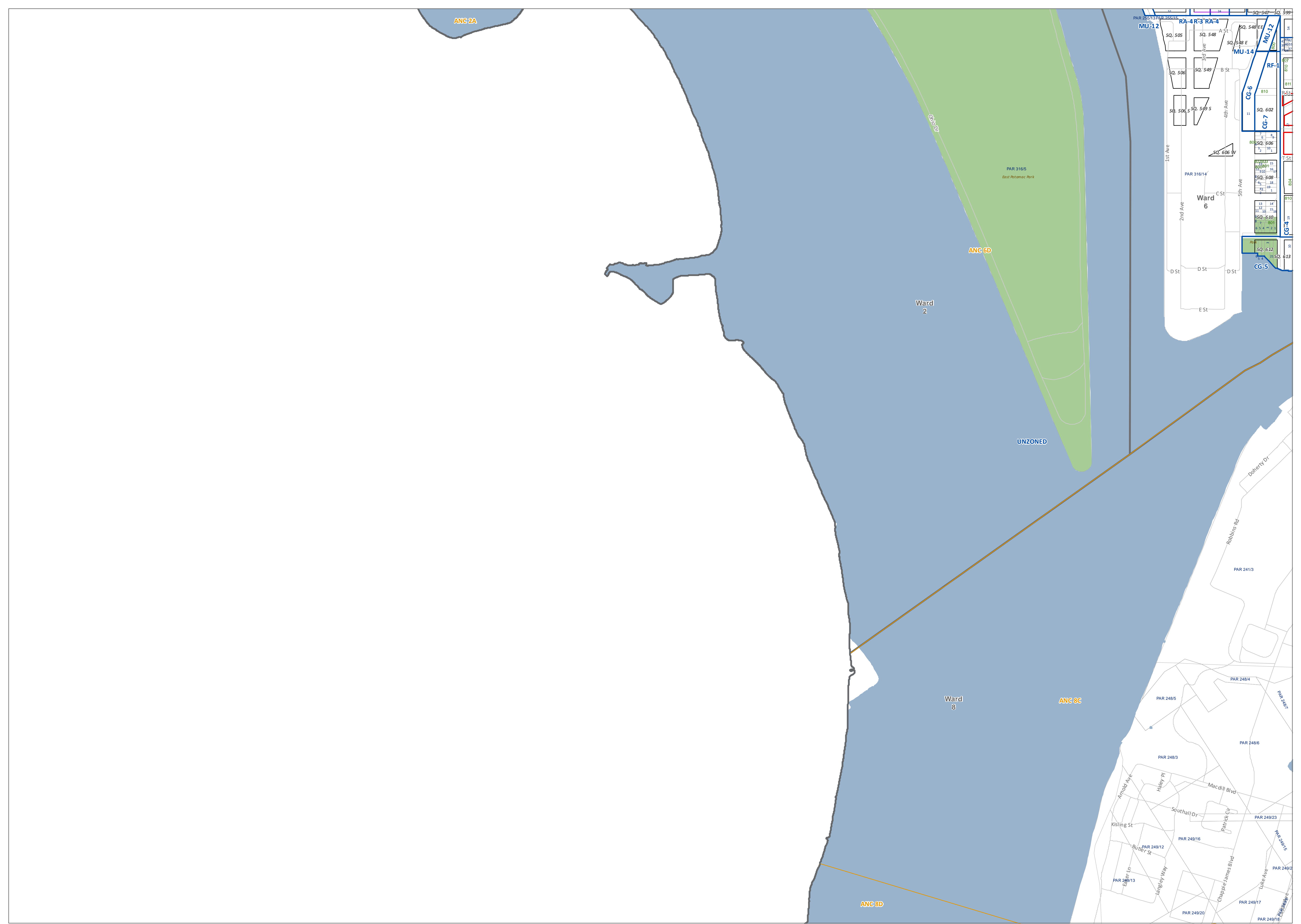
To certify zoning on any property in order to satisfy a legal requirement, contact the Office of Zoning at the address or number listed below.
 Prepared by the District of Columbia Office of Zoning, 441 4th Street, NW Suite 200 South, Washington, DC 20001 202-727-6311 <http://www.dcoz.dc.gov>

- Active PUD
- Pending PUD
- Downtown Subareas
- Pending Zoning
- Campus Plans
- Zone Districts
- ANC
- Ward
- Lot Boundary
- Primary Street
- Secondary Street
- Tertiary Street
- Dimensions



Map 12

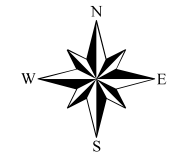
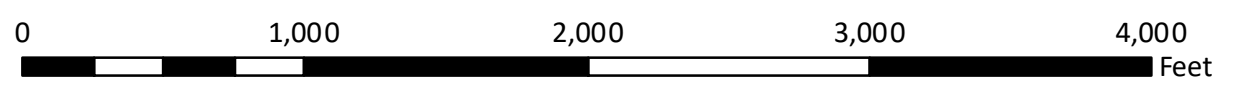
Zoning Map of the District of Columbia



Zoning Regulations of 2016 - Zoning Districts

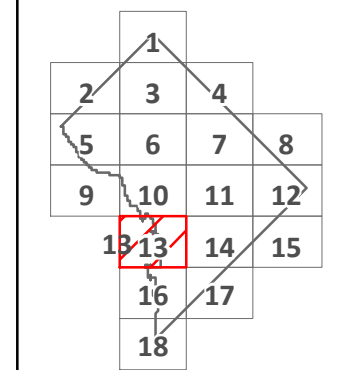
- | | |
|--------------------------------------------------|---------------------------------------|
| R - Residential Zones | HE - Hill East Zones |
| RF - Residential Flat Zones | ARTS - Mixed-Use Uptown Arts Zones |
| RA - Residential Apartment Zones | RC - Reed-Cooke Zones |
| MU - Mixed-Use Zones | SEFC - Southeast Federal Center Zones |
| NC - Neighborhood Mixed Use Zones | StE - St. Elizabeths Zones |
| D - Downtown Zones | USN - Union Station North Zones |
| PDR - Production, Distribution, and Repair Zones | WR - Walter Reed Zones |
| CG - Capitol Gateway Zones | |

**Summary Extract of the
Official Zoning Map of the District of Columbia
Printed on October 1, 2017**



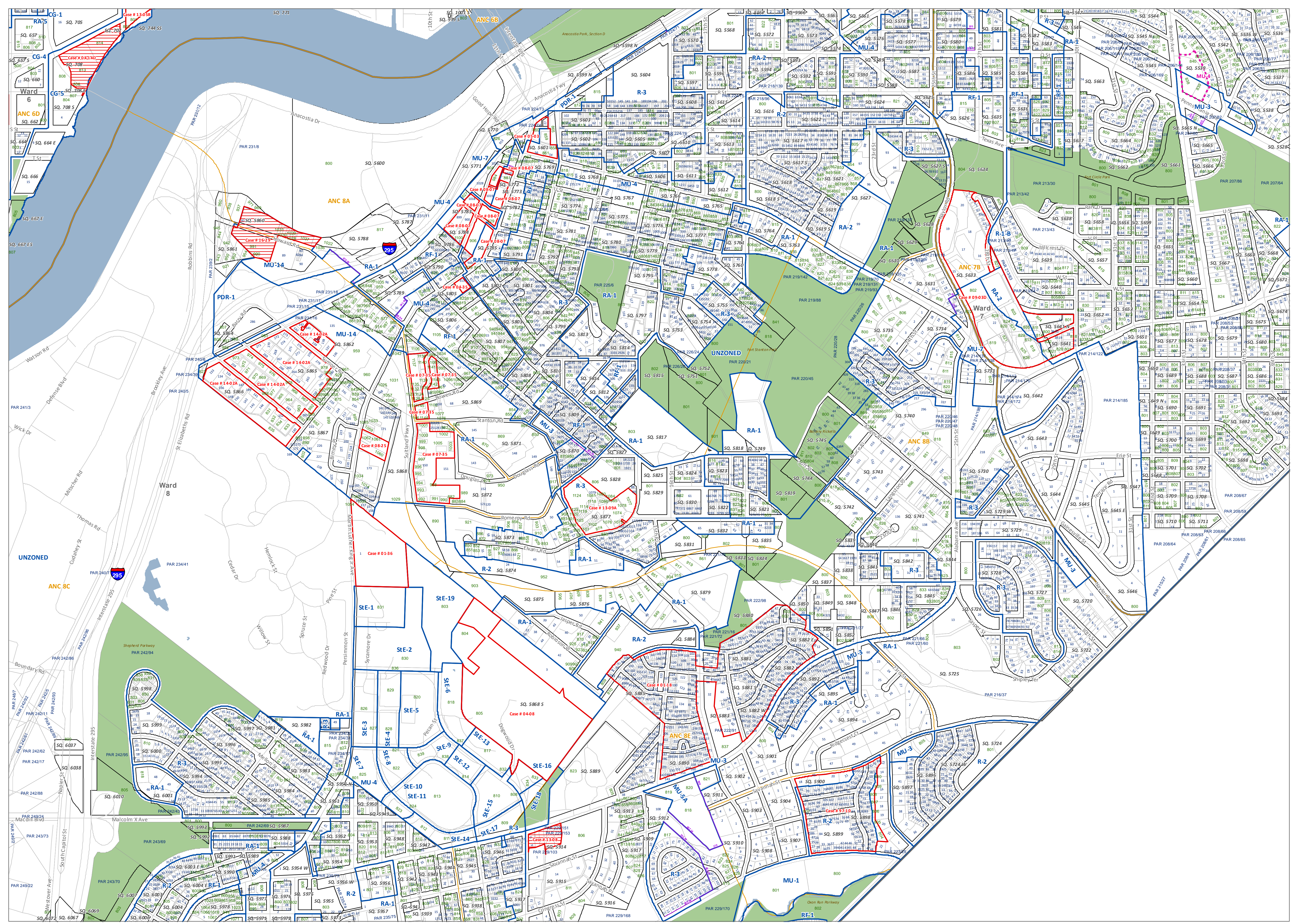
To certify zoning on any property in order to satisfy a legal requirement, contact the Office of Zoning at the address or number listed below.
Prepared by the District of Columbia Office of Zoning, 441 4th Street, NW Suite 200 South, Washington, DC 20001 202-727-6311 <http://www.dcoz.dc.gov>

- | | | | |
|-------------------|----------------|------------------|-----------------|
| Active PUD | Campus Plans | Lot Boundary | Primary Street |
| Pending PUD | Zone Districts | Secondary Street | Tertiary Street |
| Downtown Subareas | ANC | Dimensions | |
| Pending Zoning | Ward | | |



Map 13

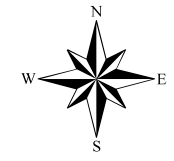
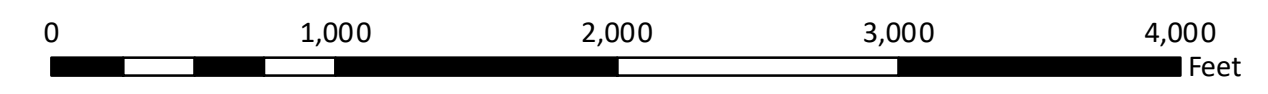
**Zoning Map of the
District of Columbia**



Zoning Regulations of 2016 - Zoning Districts

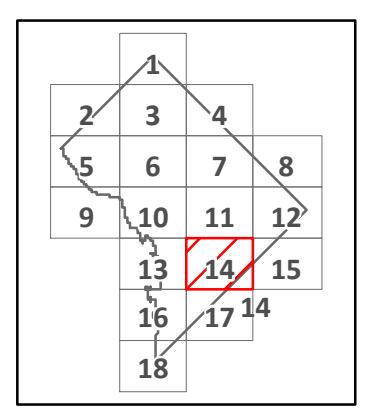
- R - Residential Zones
- RF - Residential Flat Zones
- RA - Residential Apartment Zones
- MU - Mixed-Use Zones
- NC - Neighborhood Mixed Use Zones
- D - Downtown Zones
- PDR - Production, Distribution, and Repair Zones
- CG - Capitol Gateway Zones
- HE - Hill East Zones
- ARTS - Mixed-Use Uptown Arts Zones
- RC - Reed-Cooke Zones
- SEFC - Southeast Federal Center Zones
- StE - St. Elizabeths Zones
- USN - Union Station North Zones
- WR - Walter Reed Zones

Summary Extract of the Official Zoning Map of the District of Columbia
 Printed on October 1, 2017



To certify zoning on any property in order to satisfy a legal requirement, contact the Office of Zoning at the address or number listed below.
 Prepared by the District of Columbia Office of Zoning, 441 4th Street, NW Suite 200 South, Washington, DC 20001 202-727-6311 <http://www.dcoz.dc.gov>

- Active PUD
- Campus Plans
- Lot Boundary
- Primary Street
- Pending PUD
- Zone Districts
- Secondary Street
- Downtown Subareas
- ANC
- Tertiary Street
- Pending Zoning
- Ward
- Dimensions



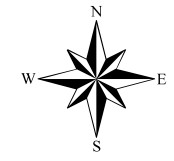
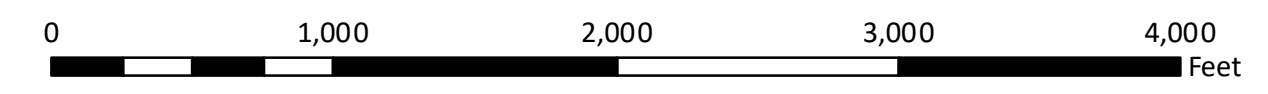
Map 14
Zoning Map of the District of Columbia



Zoning Regulations of 2016 - Zoning Districts

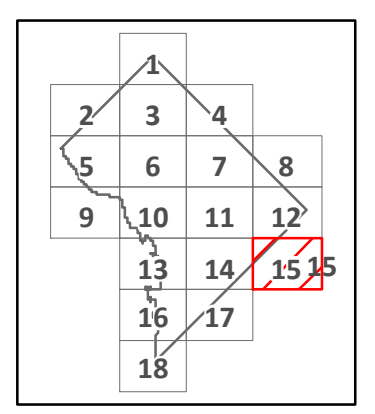
- | | |
|--------------------------------------------------|---------------------------------------|
| R - Residential Zones | HE - Hill East Zones |
| RF - Residential Flat Zones | ARTS - Mixed-Use Uptown Arts Zones |
| RA - Residential Apartment Zones | RC - Reed-Cooke Zones |
| MU - Mixed-Use Zones | SEFC - Southeast Federal Center Zones |
| NC - Neighborhood Mixed Use Zones | StE - St. Elizabeths Zones |
| D - Downtown Zones | USN - Union Station North Zones |
| PDR - Production, Distribution, and Repair Zones | WR - Walter Reed Zones |
| CG - Capitol Gateway Zones | |

**Summary Extract of the
Official Zoning Map of the District of Columbia
Printed on October 1, 2017**



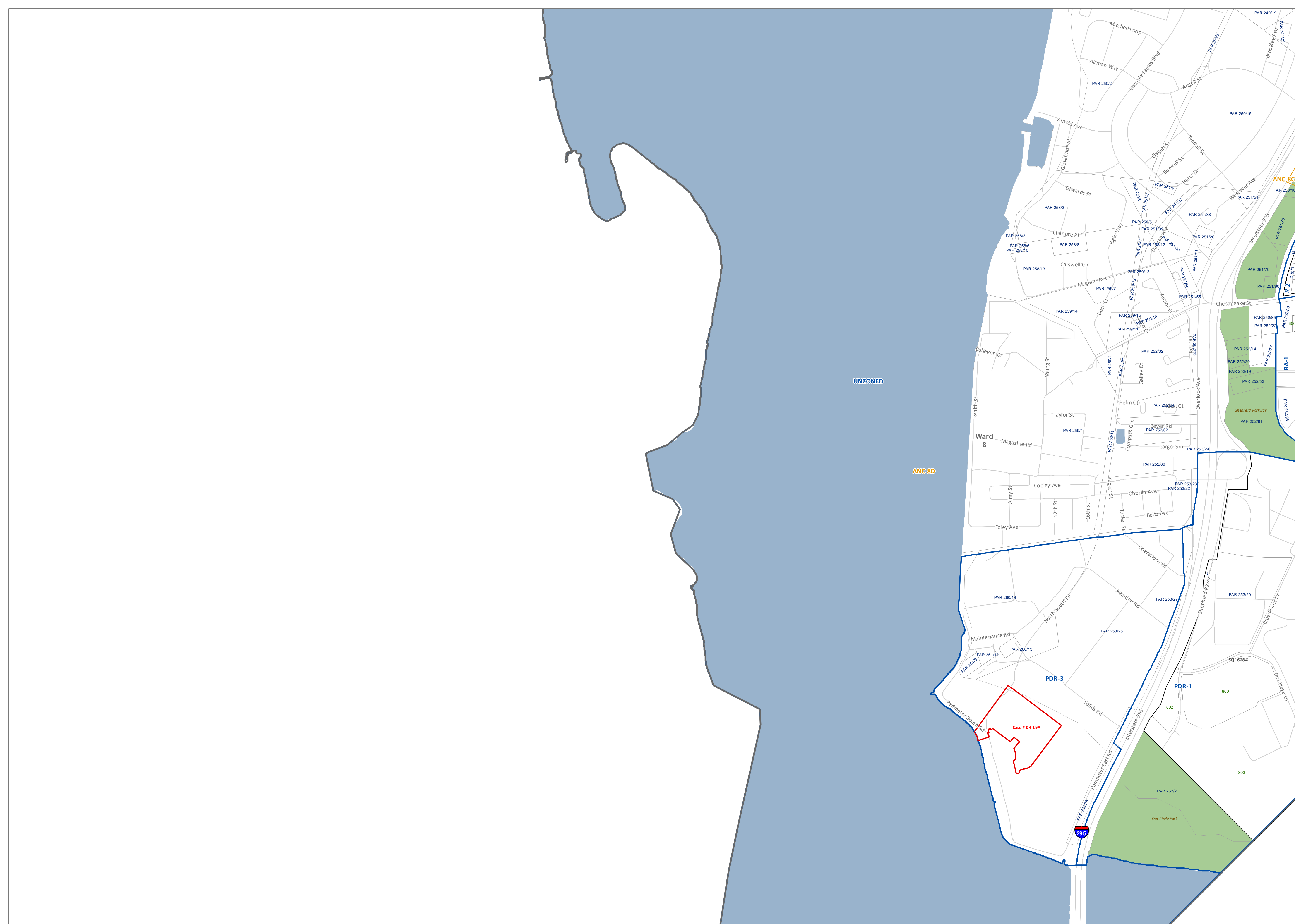
To certify zoning on any property in order to satisfy a legal requirement, contact the Office of Zoning at the address or number listed below.
Prepared by the District of Columbia Office of Zoning, 441 4th Street, NW Suite 200 South, Washington, DC 20001 202-727-6311 <http://www.dcoz.dc.gov>

- | | | | |
|-------------------|----------------|--------------|------------------|
| Active PUD | Campus Plans | Lot Boundary | Primary Street |
| Pending PUD | Zone Districts | | Secondary Street |
| Downtown Subareas | ANC | | Tertiary Street |
| Pending Zoning | Ward | | Dimensions |



Map 15

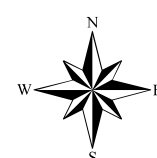
**Zoning Map of the
District of Columbia**



Zoning Regulations of 2016 - Zoning Districts

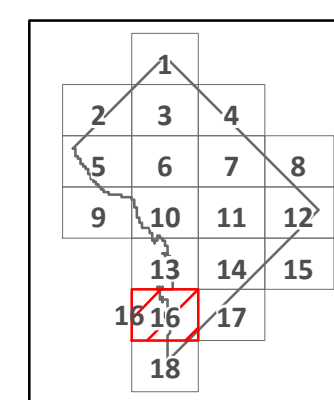
- | | |
|--------------------------------------------------|---------------------------------------|
| R - Residential Zones | HE - Hill East Zones |
| RF - Residential Flat Zones | ARTS - Mixed-Use Uptown Arts Zones |
| RA - Residential Apartment Zones | RC - Reed-Cooke Zones |
| MU - Mixed-Use Zones | SEFC - Southeast Federal Center Zones |
| NC - Neighborhood Mixed Use Zones | StE - St. Elizabeths Zones |
| D - Downtown Zones | USN - Union Station North Zones |
| PDR - Production, Distribution, and Repair Zones | WR - Walter Reed Zones |
| CG - Capitol Gateway Zones | |

**Summary Extract of the
Official Zoning Map of the District of Columbia
Printed on October 1, 2017**



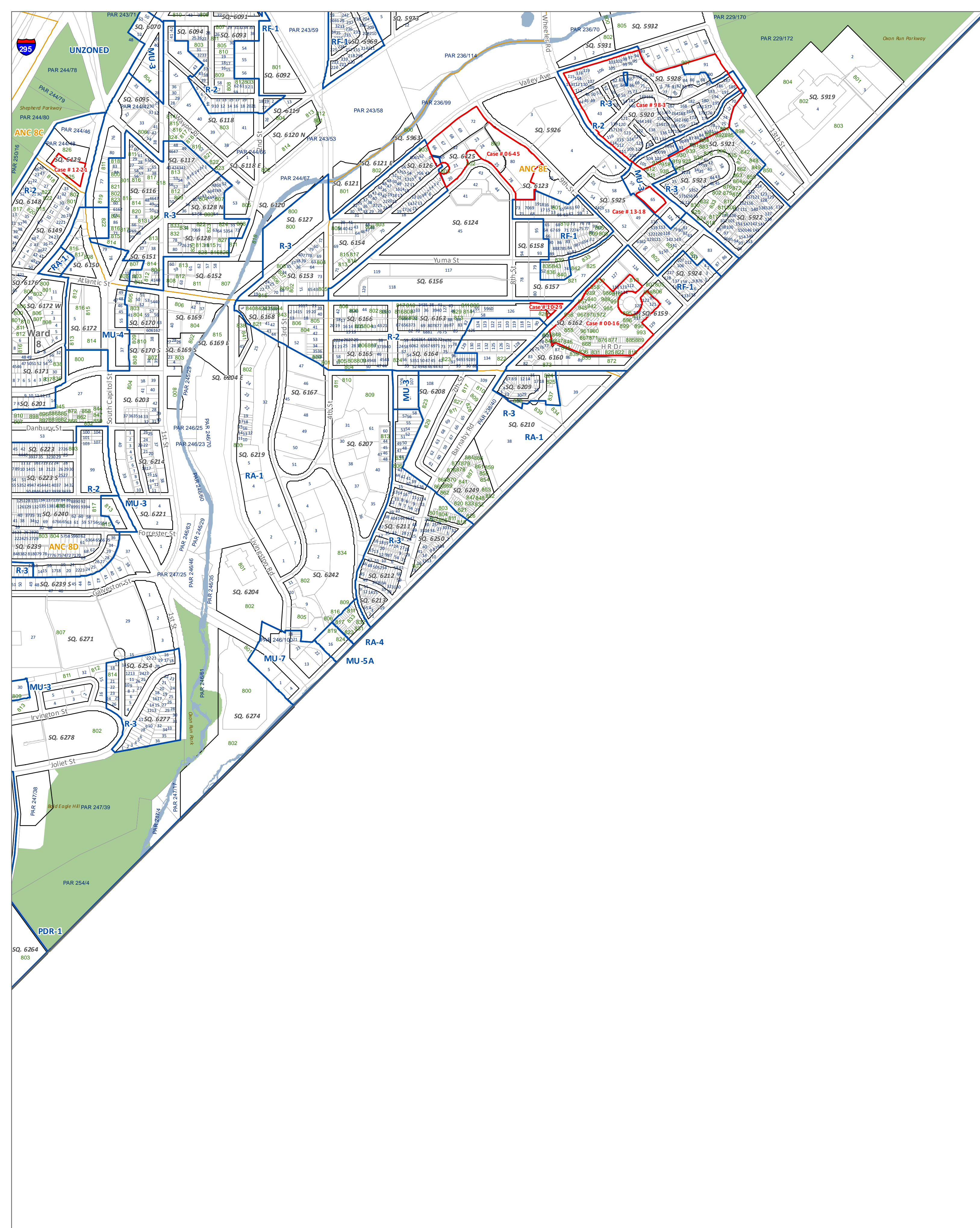
To certify zoning on any property in order to satisfy a legal requirement, contact the Office of Zoning at the address or number listed below.
Prepared by the District of Columbia Office of Zoning, 441 4th Street, NW
Suite 200 South, Washington, DC 20001 202-727-6311 <http://www.dcoz.dc.gov>

- | | | | |
|-------------------|----------------|--------------|------------------|
| Active PUD | Campus Plans | Lot Boundary | Primary Street |
| Pending PUD | Zone Districts | | Secondary Street |
| Downtown Subareas | ANC | | Tertiary Street |
| Pending Zoning | Ward | | Dimensions |



Map 16

**Zoning Map of the
District of Columbia**

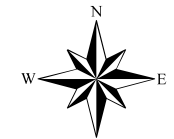
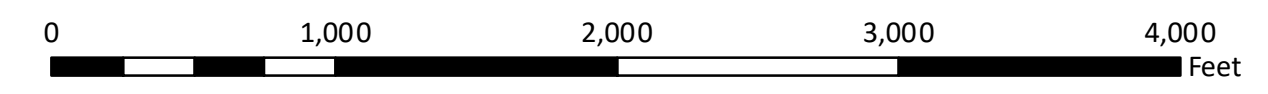


Zoning Regulations of 2016 - Zoning Districts

- R - Residential Zones
- RF - Residential Flat Zones
- RA - Residential Apartment Zones
- MU - Mixed-Use Zones
- NC - Neighborhood Mixed Use Zones
- D - Downtown Zones
- PDR - Production, Distribution, and Repair Zones
- CG - Capitol Gateway Zones

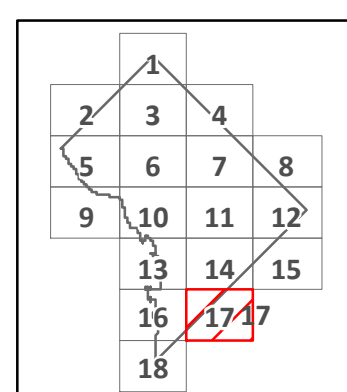
- HE - Hill East Zones
- ARTS - Mixed-Use Uptown Arts Zones
- RC - Reed-Cooke Zones
- SEFC - Southeast Federal Center Zones
- StE - St. Elizabeths Zones
- USN - Union Station North Zones
- WR - Walter Reed Zones

**Summary Extract of the Official Zoning Map of the District of Columbia
Printed on October 1, 2017**

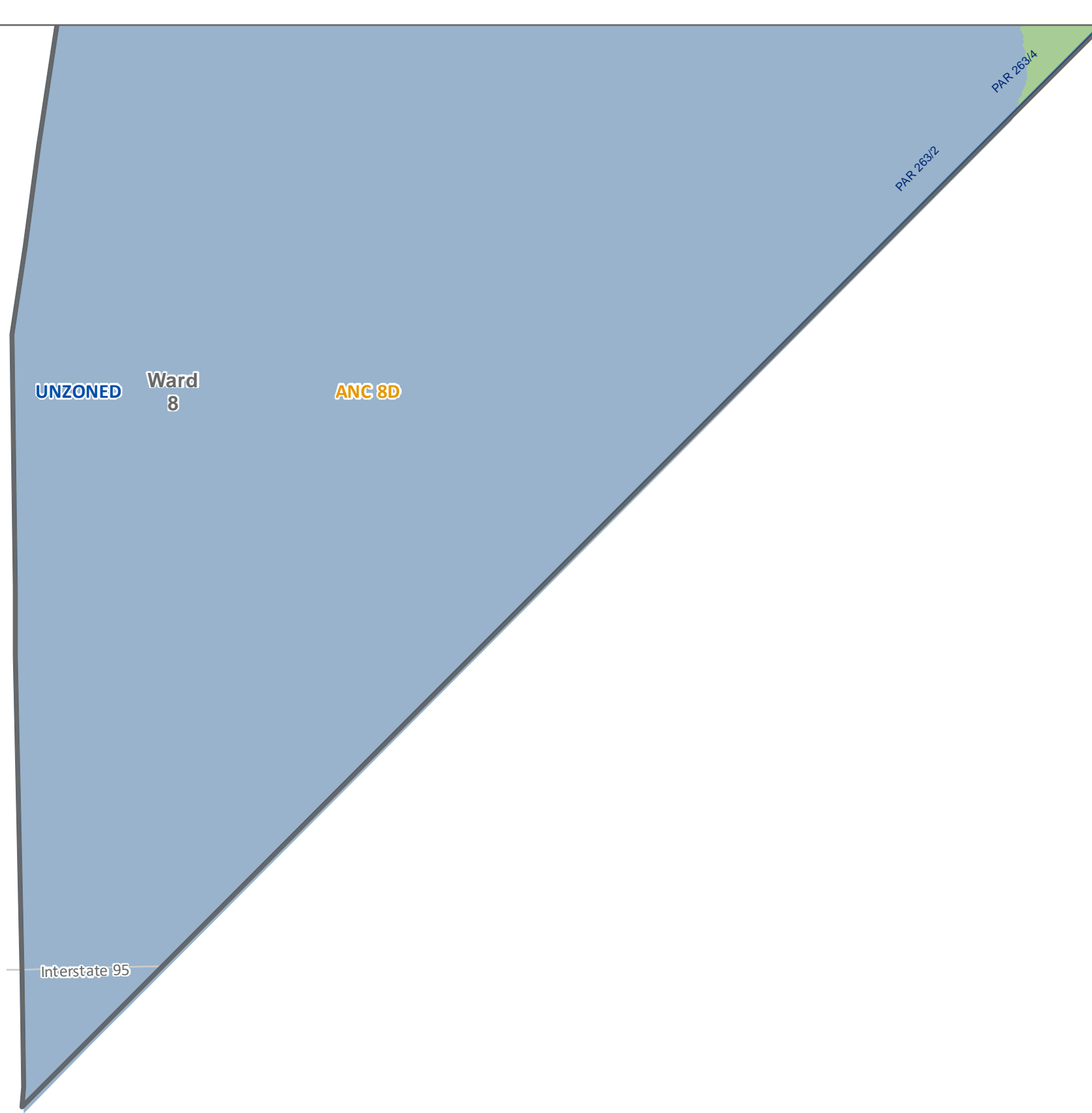


To certify zoning on any property in order to satisfy a legal requirement, contact the Office of Zoning at the address or number listed below.
Prepared by the District of Columbia Office of Zoning, 441 4th Street, NW Suite 200 South, Washington, DC 20001 202-727-6311 <http://www.dcoz.dc.gov>

- Active PUD
- Pending PUD
- Downtown Subareas
- Pending Zoning
- Campus Plans
- Zone Districts
- ANC
- Ward
- Lot Boundary
- Primary Street
- Secondary Street
- Tertiary Street
- Dimensions



Map 17
Zoning Map of the District of Columbia

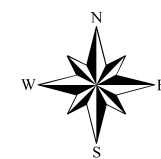
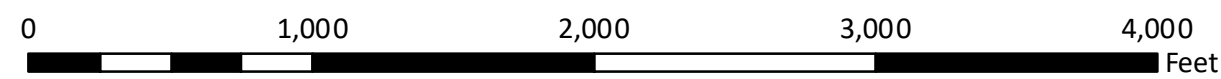


Zoning Regulations of 2016 - Zoning Districts

R - Residential Zones
 RF - Residential Flat Zones
 RA - Residential Apartment Zones
 MU - Mixed-Use Zones
 NC - Neighborhood Mixed Use Zones
 D - Downtown Zones
 PDR - Production, Distribution, and Repair Zones
 CG - Capitol Gateway Zones

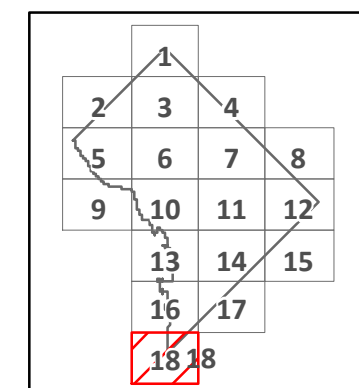
HE - Hill East Zones
 ARTS - Mixed-Use Uptown Arts Zones
 RC - Reed-Cooke Zones
 SEFC - Southeast Federal Center Zones
 StE - St. Elizabeths Zones
 USN - Union Station North Zones
 WR - Walter Reed Zones

**Summary Extract of the
 Official Zoning Map of the District of Columbia
 Printed on October 1, 2017**



To certify zoning on any property in order to satisfy a legal requirement, contact the Office of Zoning at the address or number listed below.
 Prepared by the District of Columbia Office of Zoning, 441 4th Street, NW Suite 200 South, Washington, DC 20001 202-727-6311 <http://www.dcoz.dc.gov>

- Active PUD
- Campus Plans
- Lot Boundary
- Primary Street
- Pending PUD
- Zone Districts
- Secondary Street
- Downtown Subareas
- ANC
- Tertiary Street
- Pending Zoning
- Ward
- Dimensions



Map 18

**Zoning Map of the
 District of Columbia**